

We Need **YOUR** Help



LEAD SERVICE LINE INVENTORY

To address lead in drinking water, the EPA has mandated all water supply systems complete a service line inventory.

For additional information, visit
dgr.com/services-LSInventory

Do You Have a Lead Service Line?

Test to Find Out:

Materials needed:

A strong magnet, a coin and a flathead screwdriver.

1. Find the water service line entering the building:

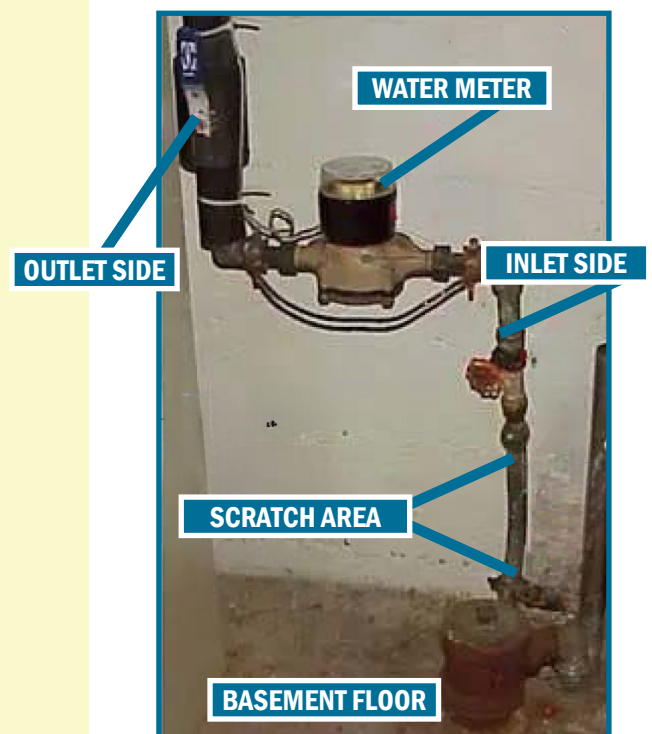
The water service line will typically enter the building through the basement floor or the basement side wall. If you don't have a basement, the service line will likely enter the building through the floor on the main level. A shut-off valve and water meter will be installed on this pipe. Test the pipe between the entry point into the building and the shut off valve, as shown at right.

2. Scratch test:

Scratch the outer surface of the pipe with a coin or flathead screwdriver. Take caution to not puncture a hole in the pipe. Do not use sharp objects for this test.

3. Magnet Test:

Place a magnet on the pipe to check if it sticks to the pipe.



Next Steps

Please submit a picture of your service line and the questionnaire by either:

- Filling out and returning the attached form **-OR-**
- Filling out and submitting the form at the bottom of the web page:

dgr.com/services-LSInventory



MATERIAL IDENTIFICATION GUIDELINES:



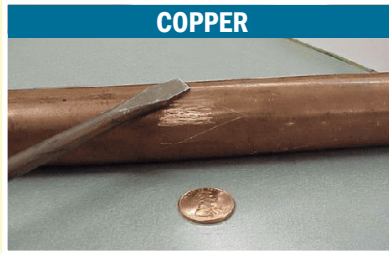
LEAD

Your Service Line is Lead if:

Scratch Test: The scratched area is shiny and silver.

Magnet Test: The magnet does not stick.

Tapping Test: You hear a dull noise when tapping the coin.



COPPER

Your Service Line is Copper if:

Scratch Test: The scratched area is copper in color like a penny.

Magnet Test: The magnet does not stick.

Tapping Test: You hear a metallic ringing noise when tapping the coin.



GALVANIZED STEEL

Your Service Line is Galvanized Steel if:

Scratch Test: The scratched area remains a dull gray.

Magnet Test: The magnet sticks.

Tapping Test: You hear a metallic ringing noise when tapping the coin.

User Self-Identification of Lead Pipes Questionnaire

Mail back or deliver to:

**City of Steen, MN
222 S. Main St.
Steen, MN 56173**

Name: _____

Email: _____

Street Address: _____

Pipe Material
(please circle one
option below):

- Lead
- Galvanized Steel
- Copper
- Plastic
- Unsure/Unknown



Lead - a dull, silver-gray color that is easily scratched with a coin.
Use a magnet - strong magnets will not cling to lead pipes.



Galvanized - A dull, silver-gray color.
Use a magnet - strong magnets will typically cling to galvanized pipes.



Copper - The color of a copper penny.

Explain how you identified pipe material or why you are unsure of pipe material: _____

If possible, please email a picture of your service line to: LSInventory@dgr.com